

## Rab3C

**Catalog Number:** 21043

**Gene Symbol:** RAB3C

**Description:** Anti-Rab3C Rabbit Polyclonal Antibody

**Background:** The Rab3 small G protein family consists of four members, Rab3A, -3B, -3C, and -3D. Rab3C is a small GTP-binding protein that associates with secretory granules of endocrine and exocrine cells. Rab3C is found in brain, adrenal gland and pituitary.

**Immunogen:** A synthetic peptide from the N-terminal region of human Rab3C

**Tested Applications:** ELISA, WB, IHC

**Recommended Dilutions:**

ELISA	1:100-1:5000
WB	1:100-1:1000
IHC	1:100-1:1000

**Concentration:** 0.2 mg/ml

**Host:** Rabbit

**Clonality:** Polyclonal

**Purity:** Purified from serum

**Format:** Liquid

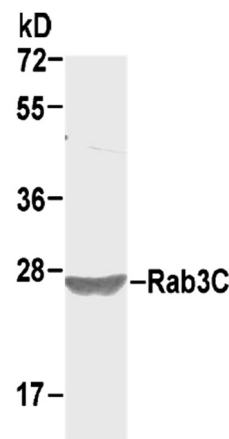
**Preservative:** no

**Constituents:** PBS (without Mg<sup>2+</sup> and Ca<sup>2+</sup>), pH7.4, 150 mM NaCl, 50% glycerol

**Species Reactivity:** Rab3C antibody recognizes Rab3C from vertebrates.

**Storage Conditions:** Store at -20°C. Avoid freeze / thaw cycles

### Western blot:



**WB: anti-Rab3C pAb**

HepG cell lysate was used for Western blot with anti-Rab3C polyclonal antibody (Cat. # 21043).

FOR RESEARCH USE ONLY. NOT FOR DIAGNOSTIC APPLICATIONS